

# Multifunctional Textiles



**ropimex**®

*Universal screen systems  
Multifunctional textiles division*



## Multifunctional textiles

**ropimex®** products have been protecting the privacy of patients and those in need of care around the globe for 35 years now.

The textiles presented in this brochure have more than proven themselves in practical application – whether here with us or in Tahiti or even Yakutsk.

We only use flame retardant qualities that will meet even the most stringent hygiene requirements. The longevity of our materials meanwhile guarantees a most cost-effective price-performance ratio.

The availability of our product range even many years later inspires trust, as do the shortest delivery periods and confectioning at our home location, where long-standing, experienced employees ensure that your orders are processed in a thorough and reliable manner.

# Multifunctional Textiles



**ropimex® - curtains made from Trevira®CS**

Our flame-retardant curtains with a feel-good factor ..... 4-5

**ropimex® - curtains made from Trevira®CS Bioactiv**

For that extra safety ..... 6-7

**ropirel®- BlackOut satin fabric**

Blackout fabric that blocks 99% of the light ..... 8-9

**ropimex® - flame-retardant bed linen made from Trevira®CS**

Sleep restfully and safely in hygienically clean bed linen ... 10-11

**Cleanique® - shower curtains of the new generation**

Hygiene of the highest degree ..... 12-13

**staph CHEK® - shower curtain**

The robust one – not only in sanitary blocks ..... 14-15

**ropimex® - curtain rings**

Highly durable, made from polyamide ..... 16-17





### Table of standard sizes

	Width	x	height in cm
TCS 110	110	x	175
TCS 121	140	x	120
TCS 122	140	x	140
TCS 123	140	x	175
TCS 151	170	x	120
TCS 152	170	x	140
TCS 153	170	x	175
TCS 200	200	x	175
TCS 211	230	x	120
TCS 212	230	x	140
TCS 213	230	x	175
TCS 215	250	x	175
TCS 217	270	x	175
TCS 300	300	x	175
TCS 330	330	x	175
TCS 360	360	x	175
TCS 390	390	x	175
TCS 420	420	x	175
TCS 460	460	x	175
TCS 500	500	x	175

Eyelet intervals ca. 14 cm



Custom designs available  
upon request  
- Made in Germany -

# Multifunctional textiles

# ropimex® - curtains made from Trevira®CS



Our flame-retardant curtains with a feel-good factor



flame-retardant



translucent; non-transparent



durable



115 g/m<sup>2</sup>



washable at 60° C with disinfectant

## Material and attributes:

- 100 % polyester, permanently flame-retardant
- the fabric meets fire class B1 as per DIN 4102-1, with the fire resistance indelibly anchored in the molecular structure
- permeable to daylight, ideal if there are several partitions in a room
- light-fast, dimensionally stable, crease-resistant, long service life
- certified to Oeko-Tex standard 100

## Applications:

- as curtains to protect privacy in healthcare and care facilities, and as attractive room partitions
- as a room divider covering

## Care:

- wash at 60° C maximum with disinfectant, pre-wash if heavily soiled
- only spin-dry very briefly, dry in tumbler and allow to cool with the drum rotating, then hang up immediately
- dry-cleaning is also possible
- please comply with the care symbols
- manufacturer instructions for the detergents and disinfectants used must be complied with

## Delivery:

- confectioned (with eyelets or curtain tape – see table for standard sizes)
- as a fabric roll
- fabric width: ca. 180 cm
- fabric weight: ca. 115 g/m<sup>2</sup>

## available in 11 colours



lilac



erica



yellow



melon



peach



azure



light-blue



white



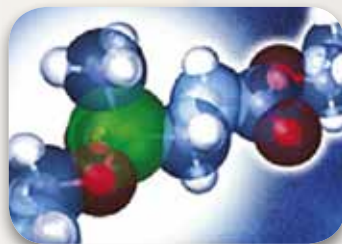
light-green



rose



champagne



Trevira®CS: This flame resistance is inherent in the specially designed fibres and is therefore permanently effective.







### Table of standard sizes

	Width	x	height in cm
TBA 110	110	x	175
TBA 121	140	x	120
TBA 122	140	x	140
TBA 123	140	x	175
TBA 151	170	x	120
TBA 152	170	x	140
TBA 153	170	x	175
TBA 200	200	x	175
TBA 211	230	x	120
TBA 212	230	x	140
TBA 213	230	x	175
TBA 215	250	x	175
TBA 217	270	x	175
TBA 300	300	x	175
TBA 330	330	x	175
TBA 360	360	x	175
TBA 390	390	x	175
TBA 420	420	x	175
TBA 460	460	x	175
TBA 500	500	x	175

Eyelet intervals ca. 14 cm



Custom designs available upon request

- Made in Germany -

# Multifunctional textiles

# ropimex<sup>®</sup> - curtains made from Trevira<sup>®</sup> CS BIOACTIVE

For that extra safety



flame-retardant



anti-bacterial



translucent; non-transparent



durable



115 g/m<sup>2</sup>



washable at 60° C with disinfectant

## Material and attributes:

### Trevira Bioactive fibres

- are permanently anti-microbial and flame-retardant
- meet the most stringent hygienic requirements
- work directly on the fibre surface
- are kind to the skin
- can not be washed out
- are not impaired by frequent wearing
- have been certified by the Hohenstein institute
- proven for gram + and gram - bacteria
- prevent the formation of odours
- certified to Oeko-Tex standard 100

### Applications:

- as curtains to protect privacy in healthcare and care facilities, and as attractive room partitions
- as a room divider covering

### Care:

- wash at 60° C maximum with disinfectant, pre-wash if heavily soiled
- only spin-dry very briefly, dry in tumbler and allow to cool with the drum rotating, then hang up immediately
- dry-cleaning is also possible
- please comply with the care symbols
- manufacturer instructions for the detergents and disinfectants used must be complied with

### Delivery:

- confectioned (with eyelets or curtain tape – see table for standard sizes)
- as a fabric roll
- fabric width: ca. 180 cm
- fabric weight: ca. 115 g/m<sup>2</sup>



## available in 4 colours



white



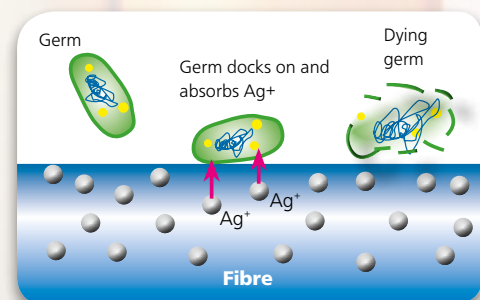
peach



light-blue



light-green



How Trevira<sup>®</sup> CS BIOACTIVE works



#### Table of standard sizes

Width x height in cm

RO110	110	x	175
RO140	140	x	175
RO170	170	x	175
RO200	200	x	175
RO230	230	x	175
RO250	250	x	175
RO270	270	x	175
RO300	300	x	175
RO330	330	x	175
RO360	360	x	175
RO390	390	x	175
RO420	420	x	175
RO460	460	x	175
RO500	500	x	175

Eyelet intervals ca. 14 cm



Custom designs available  
upon request

- Made in Germany -

# Multifunctional textiles



# ropirel®- BlackOut satin fabric



Blackout fabric that blocks 99% of the light\*



flame-  
retardant



99 % light block



soft feel



235 g/m<sup>2</sup>



washable at  
30°C

## Material and attributes:

- 100% polyester, permanently flame-retardant
- the fabric meets fire class B1 as per DIN 4102-1, with the fire resistance indelibly anchored in the molecular structure
- uncoated, both sides are the same  
The BlackOut effect is achieved by way of a special fabric construction.
- very beautiful draping properties

## Applications:

- as curtains for blacking out rooms on healthcare and care facilities, in offices and private homes
- as bedspreads, table coverings and slipcovers

## Care:

Machine-wash in cycle for delicate fabrics at 30° C. Do not bleach. Do not use acid in rinse. Only spin dry slightly and then hang up immediately and as wet as possible. Iron slight creases out at lowest setting. Do not iron hot, exercise care when ironing with steam. Only dry in tumble dryer under reduced thermal stress and allow to dry with the drum still rotating. Dry-cleaning is possible. Manufacturer instructions for the detergents and disinfectants used must be complied with

## Delivery:

- confectioned (with eyelets or curtain tape – see table for standard sizes)
- as a fabric roll
- fabric width: ca. 210 cm
- fabric weight: ca. 235 g/m<sup>2</sup>



## available in 7 colours



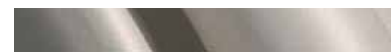
royal blue



azure



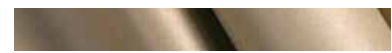
silver-grey



champagne



copper



gold



pale green



\* Please note: direct, full-on sunlight reduces the blackout effect



**Don't hesitate to ask for an offer for all sizes you need.**

**We propose duvets, pillows, duvet cases, pillow cases and sheets in Tevira®CS quality.**



Multifunctional textiles

# ropimex® - flame-retardant bed linen made from Trevira® CS

Sleep restfully and safely in hygienically clean bed linen



flame-retardant



durable



soft feel



170 g/m<sup>2</sup>



washable at  
95°C

## Material and attributes:

- 100% polyester, permanently flame-retardant
- the fabric meets fire class B1 as per DIN 4102-1, with the fire resistance indelibly anchored in the molecular structure
- certified to Oeko-Tex standard 100
- breathable, hence ensuring quick moisture transport, and helps prevent strong sweating
- soft, flowing feel
- suitable for allergy sufferers
- no skin irritations
- highly abrasion-resistant
- 3.3 times more durable than cotton
- 39 % lower total costs over the service life in comparison with cotton
- unblended and recyclable

## Applications:

- as bed linen, in particular for sensitive premises such as hospitals, nursing and social/welfare facilities

## Care:

- detailed care instructions available upon request
- manufacturer instructions for the detergents and disinfectants used must be complied with

## Delivery:

- confectioned (with eyelets or curtain tape – see table for standard sizes)
- as a fabric roll
- fabric width: ca. 160 cm
- fabric weight: ca. 170 g/m<sup>2</sup>

## available in 4 colours



light blue



gold



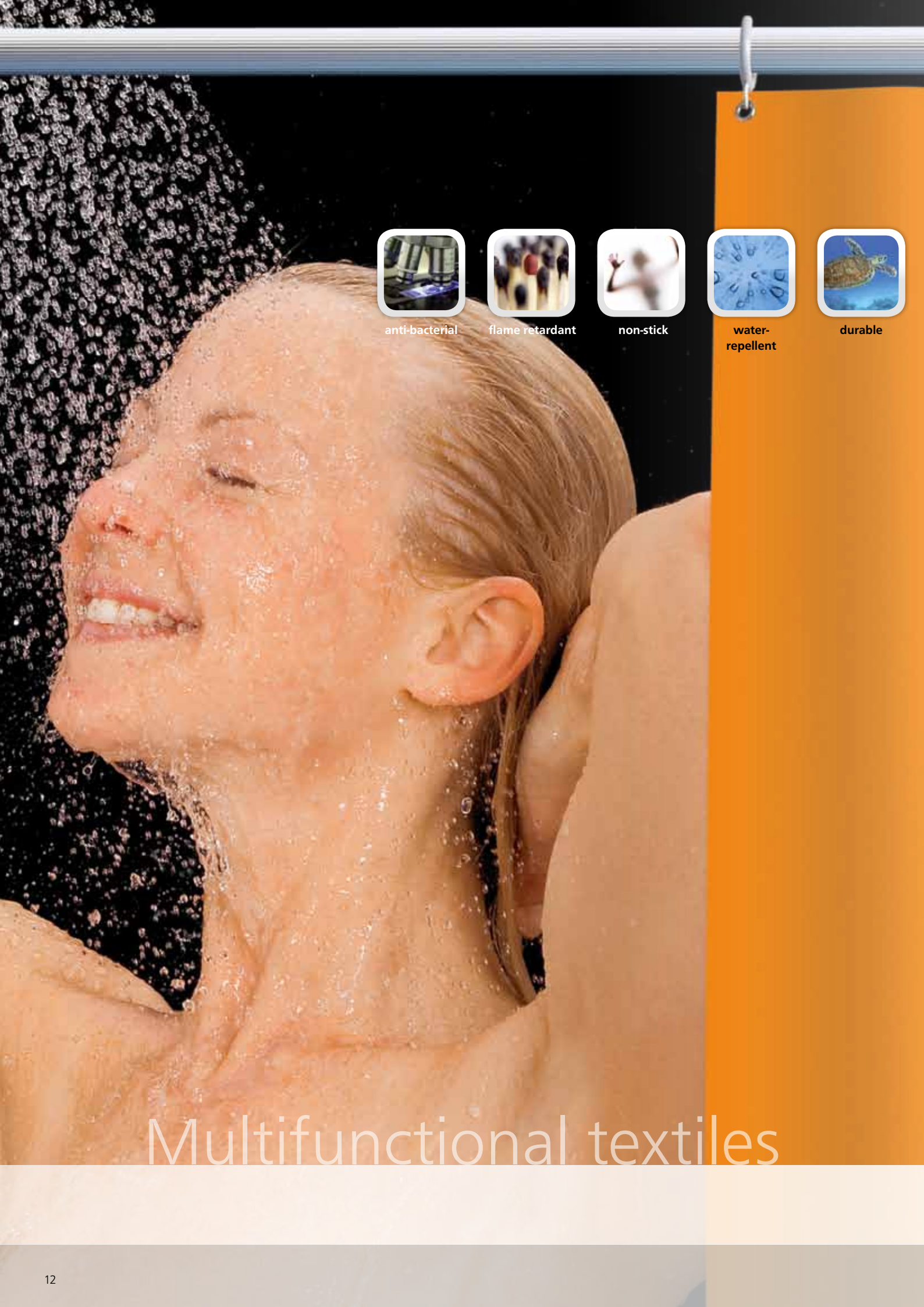
white



peach







anti-bacterial



flame retardant



non-stick



water-repellent



durable

# Multifunctional textiles

# Cleanique®: Shower curtains of the new generation

Hygiene of the highest degree

**Cleanique**  
The Shower Curtain



recyclable    non-foxing, non-moulding    economical    washable    odourless    tear-proof    seamlessly soft as velvet    270 g/m<sup>2</sup>

## Material and attributes:

- thermoplastic polyether polyurethane with patented anti-bacterial and fungicidal agent – provides permanent and reliable protection from germs and mould infestations.  
Anti-microbial effectiveness tested in accordance with ASTM 2180-01 (staphylococcus aureus, pseudomonas aeroginosa, aspergillus niger, candida albicans)
- stabilizers against ultraviolet radiation keep the material from yellowing
- fire protection classes: B1 as per DIN 4102 (correspondingly Belgian A2, French M2) and in line with UL94 (content identical with LEC/DIN EN 60695-11-10 and -20) class V0 (self-extinguishing)
- approved for skin contact in accordance with FDA (ISO 10993)
- water-repellent as per DIN 54004
- light-fast as per DIN 54004
- resistant to rubbing as per DIN 54021
- tear-proof as per DIN EN 10002
- beautiful draping properties
- soft feel

## Applications:

- as shower curtains in healthcare and nursing facilities, in private homes, baths, saunas and wellness facilities
- as an underlay and/or hygienic overlay for laboratories or areas with heightened hygienic requirements

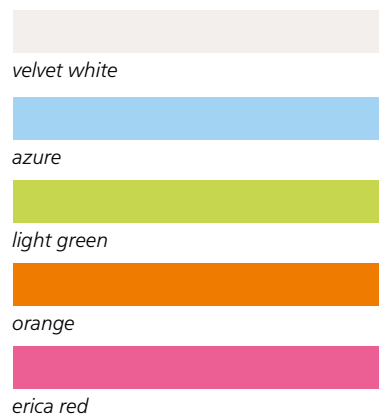
## Care:

- simply clean with water, a sponge and conventional household cleaner/detergent
- also machine-washable at setting for delicate fabrics (30° C maximum)
- manufacturer instructions for the detergents and disinfectants used must be complied with

## Delivery:

- confectioned – only with eyelets (see table for standard sizes)
- as a roll of fabric
- fabric width: 200 cm
- fabric weight: ca. 270 g/m<sup>2</sup>
- curtains are eyeleted

## available in 5 colours



## Table of standard sizes:

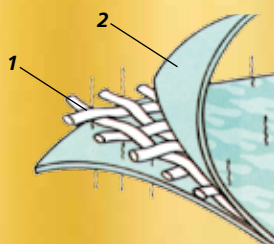
	Width x height in cm	
CQ108	100	x 80
CQ128	120	x 180
CQ1218	120	x 180
CQ1220	120	x 200
CQ1420	140	x 200
CQ1620	160	x 200
CQ1820	180	x 200
CQ2020	200	x 200
CQ2220	220	x 200
CQ2420	240	x 200
CQ3020	300	x 200

Eyelet intervals ca. 14 cm



Custom designs available upon request  
- Made in Germany -





- 1. The „inner workings”** - loosely woven middle layer made from high-grade synthetic fibre. Active anti-bacterial components are embedded in this layer in the production process.
- 2. Outer film layers** - provide the antibacterial component with permanent effectiveness on the surface

# Multifunctional textiles



# ropimex® - curtains made from staph CHEK®

The fabric for sanitary blocks



anti-bacterial



flame-retardant



non-stick



impervious to fluids



durable



non-foxing, non-moulding



330 g/m<sup>2</sup>

## Material and attributes:

- anti-bacterial
- flame-retardant
- self-extinguishing
- anti-static
- impervious to liquids
- skin-friendly
- does not stick to the body
- staining- and soiling-resistant
- durable
- foxing and moulding excluded

## Applications:

- staph CHEK® is a highly stable, compact fabric that is ideal for use as a shower curtain, and in areas where careful treatment cannot be guaranteed because of exceptional circumstances.

## Care:

- simply wipe down with a sponge and household cleaner
- stubborn or difficult stains can be removed with a standard household cleaner/vinyl cleaner and/or a soft brush, strongly dried-in stains must be soaked beforehand
- manufacturer instructions for the detergents and disinfectants used must be complied with

## Delivery:

- confectioned – (with eyelets or curtain tape - see table for standard sizes)
- as a roll of fabric
- fabric width: ca. 180 cm
- fabric weight: ca. 330 g/m<sup>2</sup>

## available in 5 colours



light blue



white



yellow



beige



mint

## Table of standard sizes:

	Width x height in cm		
VH/C 121	140	x	120
VH/C 122	140	x	140
VH/C 151	170	x	120
VH/C 152	170	x	140
VH/C 211	220	x	120
VH/C 212	220	x	140
VH/C 100	100	x	80
VH/C 120	120	x	80
VH/C 1219	120	x	190

Eyelet intervals ca. 14 cm



Custom designs available upon request

- Made in Germany -

**ropimex®**  
Universal screen systems  
Multifunctional textiles division

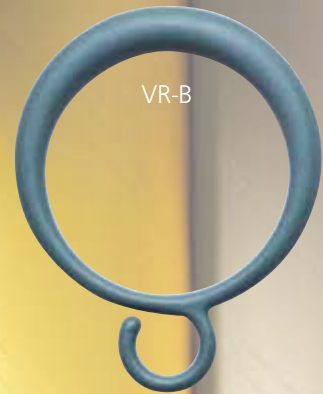
### Type (G)



VR-W



VR-G



VR-B



VR-O



VR-R



VR-L



VR-Beige

### Type (H)



RVS-VR-W



RVS-VR-G

# Multifunctional textiles

# ropimex®- curtain rings

Highly durable, made from polyamide

## Material and attributes:

- rings made from polyamide
- extremely long lifetime

## Applications:

- **Type (G)**  
Closed curtain ring for curtain rails featuring one freely accessible end for threading the rings on.  
Type (H) can also be used with these rails
- **Type (H)**  
Half-open curtain ring for already provided, permanently fixed systems, i.e. systems firmly fastened to the wall on both ends

## Delivery:

- ropimex® curtain rings are always included in the delivery of telescopes, telescope arms and telescope cabins
- when placing individual orders for curtains, please always order the curtain rings separately at the same time
- curtain rings can also be ordered individually, if desired

## Colours:

- Type (G) white, grey, blue, yellow, erica, green, beige
- Type (H) white, grey



When the curtain is pulled down with force its eyelets are released by the curtain rings, preventing injury and damage to the system.

## Type (G)

Closed curtain ring

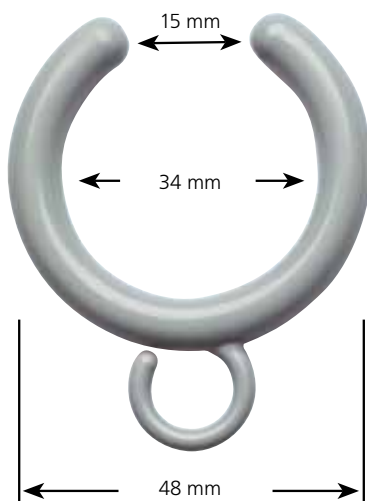
Illustration approximately life size



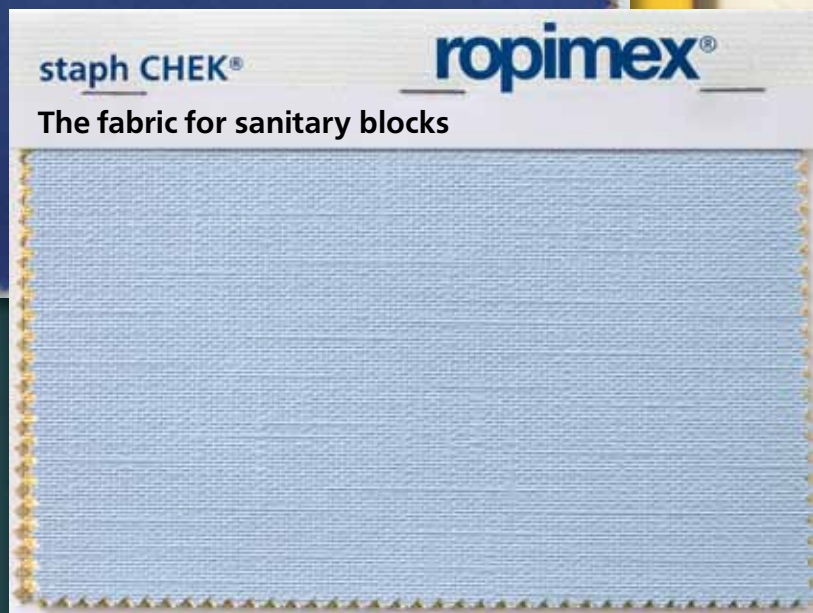
## Type (H)

half-open curtain ring

Illustration approximately life size







# Multifunctional textiles

# ropimex® - fabric sample cards

Please ask for our sample cards – we are always delighted by your interest!



## ropimex®- Multifunctional textiles



ropimex®- Telescopic arms



ropimex®- folding walls



ropimex®- Cubicles



ropimex®- Mobile screen



ropimex®- folding screens



ropimex®- Shower splash protection



ropimex®- Vario rail system



ropimex®- Daylight partition walls



ropimex®- Infusion arms